

Notes

Carroll County

Saline County

Waverly Gage = 11.4 at time of collection 20 October 2020

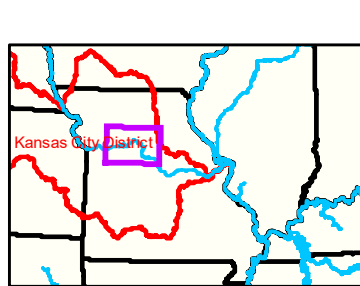
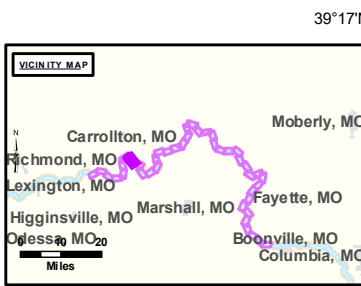
Gage_L



DISCLAIMER: The U.S. Army Corps of Engineers (USACE) provides this information as a service to the public. It is not intended to be used for any purpose other than that for which it was prepared. The USACE makes no warranty, express or implied, regarding the accuracy, reliability, or completeness of the information. The user assumes all liability for any use of the information. The USACE is not responsible for any errors or omissions in this information. The USACE is not responsible for any damage or injury resulting from the use of this information. The USACE is not responsible for any loss of data or information. The USACE is not responsible for any loss of time or money. The USACE is not responsible for any loss of life or property. The USACE is not responsible for any loss of reputation. The USACE is not responsible for any loss of honor. The USACE is not responsible for any loss of dignity. The USACE is not responsible for any loss of respect. The USACE is not responsible for any loss of honor. The USACE is not responsible for any loss of dignity. The USACE is not responsible for any loss of respect.

KANSAS CITY DISTRICT MISSOURI RIVER AREA OFFICE	
Submitted By:	MIRAO
Reviewed By:	MIRAO
Checked By:	MIRAO
Approved:	

Survey Information
 MO_03_LMR
 MO_03_LMR_20201020_CS_285_5_286_5_SORT
 20 October 2020



LEGEND

< 8	< 8 ft	Green Passing	Green	AIS Green CAN
8 - 9	8 - 9 ft	Red Passing	Red	AIS Red NUN
9 - 9.5	9 - 10 ft	Green Crossing	Green CAN	Red NUN
9.5 - 10	10 - 12 ft	Red Crossing	Junction	
10 - 12	River Mile			
12 - 14	Sailing Line			
14 - 16	BSNP Structure			
> 16	Levee			

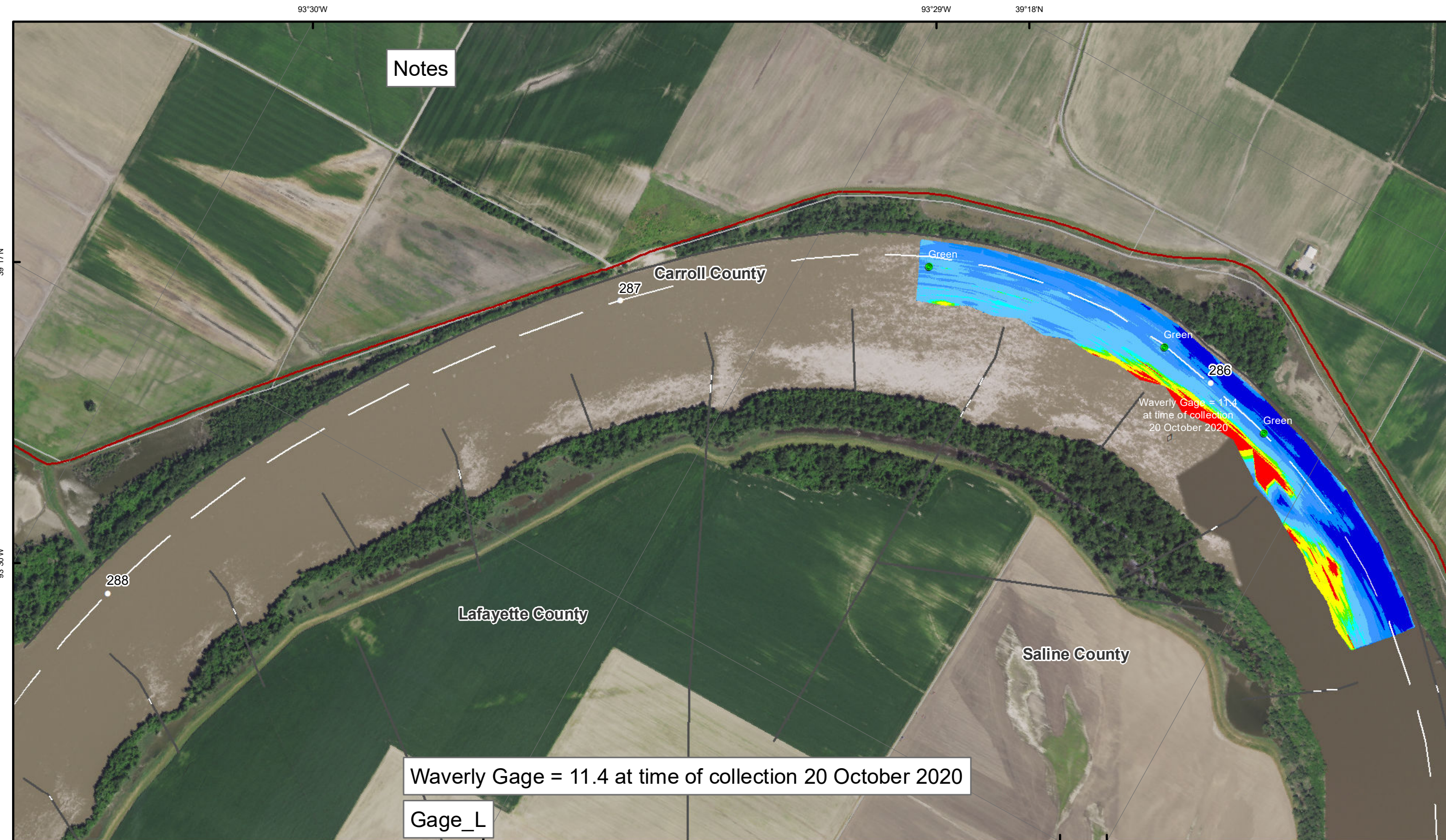
Buoy

0 312.5 625 937.5 1,250 2,500 Feet

NOTES:
 Horizontal Coordinate System:
 World Geodetic System of 1984 (WGS84), projected to the Universal Transverse Mercator (UTM) Zone 15 North.
 Distance units in U.S. Survey Feet
 Vertical Datum:
 Soundings are shown in feet and indicated depths are referenced to water surface at time of collection.
 The information depicted on this map represents the results of a survey conducted on the date indicated and can only be considered to represent the general condition existing at that time.
 The location of navigation aids are based on and provided by the U.S. Coast Guard.



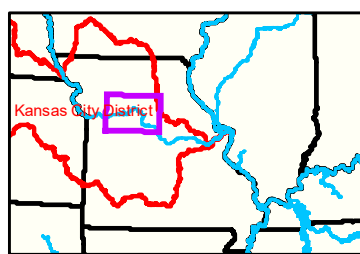
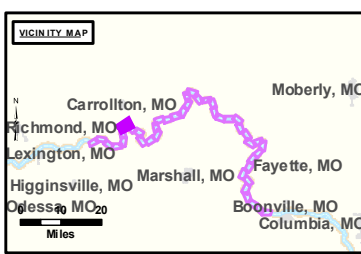
Sheet Number
 35 of 42



Notes

Waverly Gage = 11.4 at time of collection 20 October 2020

Gage_L



LEGEND

< 8	< 8 ft	Green Passing	Green	AIS Green CAN
8 - 9	8 - 9 ft	Red Passing	Red	AIS Red NUN
9 - 9.5	9 - 10 ft	Green Crossing	Green CAN	Red NUN
9.5 - 10	10 - 12 ft	Red Crossing	Junction	
10 - 12	River Mile			
12 - 14	Sailing Line			
14 - 16	BSNP Structure			
> 16	Levee			

Feet
0 312.5 625 937.5 1,250 2,500

NOTES:
 Horizontal Coordinate System:
 World Geodetic System of 1984 (WGS84), projected to the Universal Transverse Mercator (UTM) Zone 15 North. Units in U.S. Survey Feet
 Vertical Datum:
 Soundings are shown in feet and indicated depths are referenced to water surface at time of collection.
 The information depicted on this map represents the results of a survey conducted on the date indicated and can only be considered to represent the general condition existing at that time.
 The location of navigation aids are based on and provided by the U.S. Coast Guard.



DISCLAIMER:
 The U.S. Army Corps of Engineers (USACE) provides this information as a service to the public. It is not intended to be used for any purpose other than that for which it was intended. The USACE makes no warranty, express or implied, regarding the accuracy, reliability, or completeness of the information. The USACE is not responsible for any errors or omissions in this information. The USACE is not liable for any damages, including consequential damages, arising from the use of this information. The USACE is not responsible for any actions taken based on this information. The USACE is not responsible for any actions taken based on this information.

KANSAS CITY DISTRICT MISSOURI RIVER AREA OFFICE	
Submitted By:	MRAO
Reviewed By:	MRAO
Checked By:	MRAO

Survey Information
 MO_03_LMR
 MO_03_LMR_20201020_CS_285_5_286_5_SORT
 20 October 2020

Sheet Number
 36 of 42